

E4 XLS+ Multichannels

Precision Across All Channels



Easy operation

The E4 XLS+ works the way you think. Its color graphics, large screen and precision joystick have revolutionized electronic pipetting. The simple interface makes adjusting settings quick and easy.



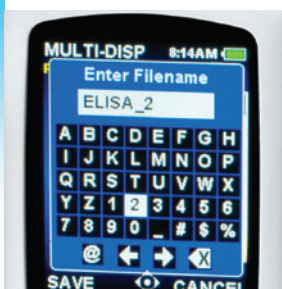
Channel consistency

The LTS™ cylindrical tip design assures fast tip mounting, consistent sample loading and leak-free seals across all channels. In addition to LTS, the new push bar design in all XLS+ multichannel pipettes assures exceptionally even and consistent aspiration across all channels.



Simplify repetitive pipetting

Multi-dispense takes the drudgery out of repetitive pipetting by calculating how many aliquots can be dispensed from a single pickup. Autopace simplifies repeat dispensing – click the joystick once and repeat dispense across a plate.



Save your protocols

Store multiple custom protocols in the E4's on-board memory. Simultaneously review and select your protocols with a simple movement of the joystick. No more re-entering protocols over and over again!



E4 XLS+ Electronic Multichannels Speed Your Workflow

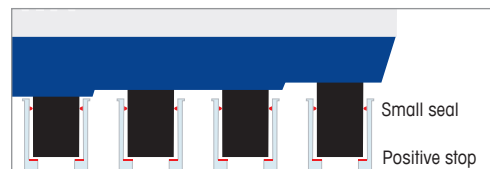
The E4™ XLS+™ multichannel pipette is a perfect tool for high-throughput work. Fast loading, lightweight, easy to handle and precision and consistency across all channels. Pipette settings, protocols and service alarms can be password protected for GLP/GMP compliance. What's more, GLP data, such as service records, cycles and status data is completely tamper proof.

E4 XLS+ Electronic Multichannel Pipette

Precise, High-throughput Pipetting



- LTS™ for consistent sample loading across all channels and up to 80% lower tip ejection forces
- Standard modes include Basic pipetting, Multi-dispense and Mix
- Advanced modes include sequential volume programming for complex protocols, titration, dilution and reverse mode pipetting
- Control of aspirate, dispense and mix speeds for challenging liquids
- Optional blowout and automatic dispense settings for precision pipetting
- Password protect pipette settings for GLP security
- Save your favorite protocols
- Simple or complex: configure the E4 for any task
- FPLC in your tip: on board PureSpeed™ sample preparation protocol
- Multilingual display and on-screen Help
- Easily accessible service records and alarms
- RFID enabled for advanced asset management
- Optional Rapid Charge Stand charges three pipettes in one hour



LTS™ LiteTouch™ Tip Ejection System

- Small seal and positive stop means consistent sample loading – across all channels, every time!
- No nozzle o-rings
- Lower forces – less fatigue
- Progressive tip ejector

Technical Data

Specifications

Model	Volume (µL)	Increment (µL)	Accuracy		Precision	
			%	µL (±)	%	µL (≤)
10 µL	1,0	0,01	4	0,04	3	0,03
	5,0		1,5	0,075	0,6	0,03
	10,0		1,0	0,1	0,4	0,04
20 µL	2	0,02	7,5	0,15	2,0	0,04
	10		1,5	0,15	0,5	0,05
	20		1,0	0,2	0,3	0,06
50 µL	5	0,05	3,5	0,18	1,5	0,075
	25		1,2	0,3	0,4	0,1
	50		0,8	0,4	0,2	0,1
200 µL	20	0,2	2,5	0,5	1,0	0,2
	100		0,8	0,8	0,25	0,25
	200		0,8	1,6	0,15	0,3
300 µL	30	0,2	2,5	0,75	1,0	0,3
	150		0,8	1,2	0,25	0,375
	300		0,8	2,4	0,15	0,45
1200 µL	100	1	3,6	3,6	0,6	0,6
	600		0,8	4,8	0,2	1,2
	1200		0,8	9,6	0,15	1,8

Rainin, LTS, LiteTouch, E4, XLS, XLS+ and Pipetting 360° are trademarks of Rainin Instrument, LLC. LabX and Direct Pipette-Scan are trademarks of METTLER TOLEDO.

Ordering Information

Cat. No.	MT-Order No.	Volume Range
8-Channel		
E8-10XLS+	17013792	0,5–10 µL
E8-20XLS+	17013793	2–20 µL
E8-50XLS+	17013794	5–50 µL
E8-200XLS+	17013795	20–200 µL
E8-300XLS+	17013796	20–300 µL
E8-1200XLS+	17014498	100–1200 µL
12-Channel		
E12-10XLS+	17013797	0,5–10 µL
E12-20XLS+	17013798	2–20 µL
E12-50XLS+	17013799	5–50 µL
E12-200XLS+	17013800	20–200 µL
E12-300XLS+	17013801	20–300 µL
E12-1200XLS+	17014499	100–1200 µL

Accessories

Cat. No.	MT-Order No.	Description
E4-RCS	17012332	Rapid Charge Stand
RFID-KIT	17011966	RFID Kit including Rainin RFID Reader and LabX Direct Pipette-Scan Software
RFID-RDR	17011964	Rainin RFID Reader
LABX-PIPET	17011965	LabX Direct Pipette-Scan Software

Note: Li-Ion battery and Wall Power Supply included.



Rainin Instrument, LLC

7500 Edgewater Drive, Oakland, CA 94621
Phone +1 510 564 1600

a METTLER TOLEDO Company

Subject to technical changes
© 10/2014 Rainin Instrument, LLC
Printed on demand from online content. H17700764 (Rev G)

www.mt.com/rainin

For more information