

Delivering **more performance**
and **reliability** around the world.

AU Family of Chemistry Systems

- Blood Banking
- Centrifugation
- Chemistry**
- Flow Cytometry
- Hematology
- Hemostasis
- Immunoassay
- Information Systems
- Lab Automation
- Molecular Diagnostics
- Rapid Diagnostics



Built on a reputation of **high reliability** and **superior throughput.**

Today's laboratories are required to deliver premium diagnostic services to ensure the highest levels of responsiveness, greater turnaround time and comprehensive test panels. The AU family of chemistry systems offer a broad range of solutions to meet the needs of your laboratory for optimal workflow efficiency.

AU systems automate chemistry testing and provide extended walkaway time. These systems offer outstanding performance in terms of quality, productivity, reliability and cost efficiency—hallmarks of the AU platform.



Enjoy the benefits that the AU family of chemistry systems can bring to your laboratory.

Reliability - allows laboratory staff to spend more time focusing on patient results.

Precision engineering - leading the way with proprietary precision optics and spot photometer technology, AU systems provide your laboratory with outstanding test accuracy.

Scalability - systems designed to meet a full spectrum of processing throughputs for multiple laboratory environments—from small testing laboratories to high-volume hospital labs and ultra high-volume reference laboratories.

Standardization - hardware components, reagents and software are standardized to minimize training requirements and streamline inventory management.

Designed for cost efficiency - minimal maintenance requirements and full automation of sample handling—from dilutions to reflex testing—result in reduced operator costs.

AU System Comparison



	AU480	AU680	AU2700*	AU5400
Photometric Throughput with ISE	Up to 800 tests results per hour	Up to 1200 tests results per hour	Up to 2133 tests results per hour	Up to 6,600 tests results per hour
Onboard Assay with ISE	63	63	51	99
Sample Load Capacity (routine/STAT)	Up to 80/22 samples	Up to 150/22 samples	Up to 300/22 samples	Up to 300/emergency 10 position sample racks for STAT testing
Ready-To-Use-Barcoded Reagent Bottles	Yes	Yes	Yes	Yes
Automated On-Board Reagent Management	Yes	Yes	Yes	Yes
BMP# Samples/Hr	67	133	267	350
Minimum Sample Volume	1 μ L	1.6 μ L	1.6 μ L	1.6 μ L
Sample Probe Clot Detection	Yes	Yes	Yes	Yes

*Also available in AU2700*Plus* configuration; only available in Europe and emerging markets.

BMP = (8 assays – Na, K, Cl, CO₂, Glu, BUN, Cre, Ca)

Powerful, High Performance

Superior throughput with fast turnaround enables you to generate anywhere from 800 test results up to 6,600 test results an hour, depending on the AU configuration you choose.

Expansive, Standardized Test Menu*

The comprehensive AU test menu consists of more than 125 convenient, barcoded, ready-to-use liquid reagents that are standardized across the entire AU family of chemistry systems.

Continuous Sample Load

The 80-300 continuous sample rack loader handles peak workloads efficiently, with STAT interrupt capability.

Simplicity and Efficiency

User-friendly Windows software reduces training time, and allows for customized menus, icons and color-keyed graphics; ease of use with built-in manuals and maintenance videos.



Intelligent Results Management

Abnormal sample results are handled automatically, initiating laboratory-definable options for reflex repeat, and on-board repeat dilutions or concentrations.

Improved Safety

Instrument sample probes are equipped with crash detection functionality. Sample and reagent probes have crash prevention to safeguard results and maximize instrument uptime.

With intelligent LIH serum indice sample flagging, results can be cross-linked to allow for serum indice flagging—ensuring integrity of results.

Remote Diagnostics

PROService remote diagnostic services, for detailed, virtual support.



*Not all products available in all geographies.

Engineered for more efficiency and flexibility.



AU680

The AU680 is designed for mid- to large-sized laboratories and hospitals to meet ever-increasing pressures on time and productivity. Flexibility of design offers standalone operation or connectivity to laboratory automation.*



AU480

The AU480 is the ideal primary chemistry analyzer for low- to mid-sized hospitals and laboratories, or as a dedicated specialty chemistry or STAT analyzer for larger institutions.



AU2700 / AU2700Plus**

Creating greater efficiency for high to very-high volume laboratories, the AU2700 and AU2700Plus provides outstanding performance in terms of quality, productivity, reliability and cost-efficiency. Flexibility of design offers standalone operation or connectivity to laboratory automation.



AU5400

The AU5400 is designed for very high- to ultra high-volume commercial and core hospital laboratories for handling immense workloads under continuous STAT conditions. Configurable as the two-module AU5420 or three-module AU5430. Flexibility of design offers standalone operation or connectivity to laboratory automation.

AU5800***

Introducing the scalable AU5800 series of next generation analyzers-coming soon to a lab near you. The AU5800 platform will offer four different configurations to meet the needs of high to ultra-high volume throughput commercials and core hospital laboratories.



*Not available in all geographies.

**The AU2700Plus is only available in Europe and emerging markets.

***Currently available in limited geographies. Pending submission and clearance by the United States Food and Drug Administration; not yet available for *in vitro* diagnostic use.

AU System Feature Highlights



Easy/Low Maintenance

- No more than 5 minutes hands-on daily maintenance
- Easy replacement of common consumables without tools



Dry Bath and Permanent Glass Cuvettes

- AU dry bath technology minimizes maintenance
- High quality glass ensures precise and accurate optics
- Saves time and reduces consumables and disposable costs



Intuitive Graphic User Interface Allows Flexibility

- Touch screen graphics, color coded alerts and tab functions ensure easy navigation
- Embedded online maintenance videos and User's Guide
- Customizable user menu
- Features real-time monitoring of sample status.



High-Precision Microsampling

- Sample volumes as low as 1 uL—ideal for pediatric and veterinarian applications
- Sample clot and liquid level detection
- Sample and reagent probe crash protection.



Best in Class ISEs

- Robust and long-life electrodes
- Electrodes can be replaced individually, less cost
- No preconditioning required; electrodes ready to use



Efficient STAT Handling

- One button STAT interrupt†
- ISE results available within 1 minute
- Cooled module with Cal and QC positions for Autocal and Auto QC

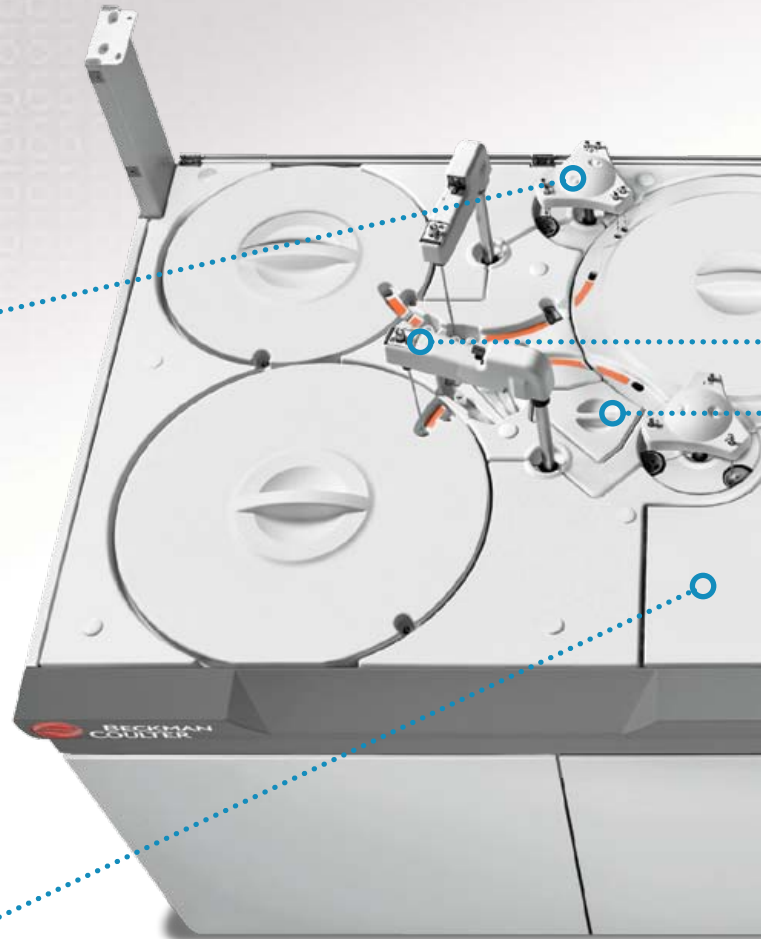
†STAT turn table not available on the AU5400 and AU5800 series analyzers.

AU 3 & 60 maintenance

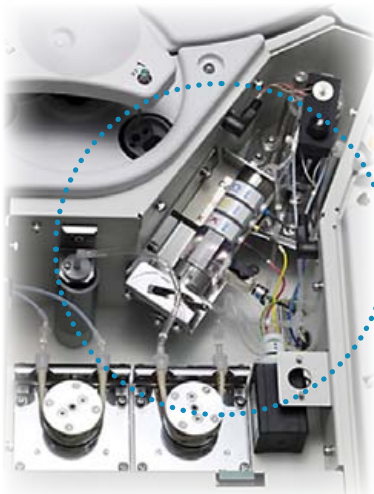
More time to **focus** on patient **results**.

Quick and easy replacement of consumables

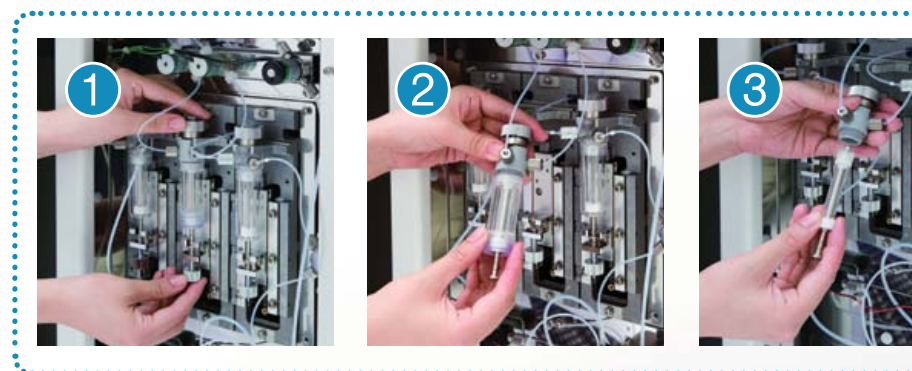
Replace mixers



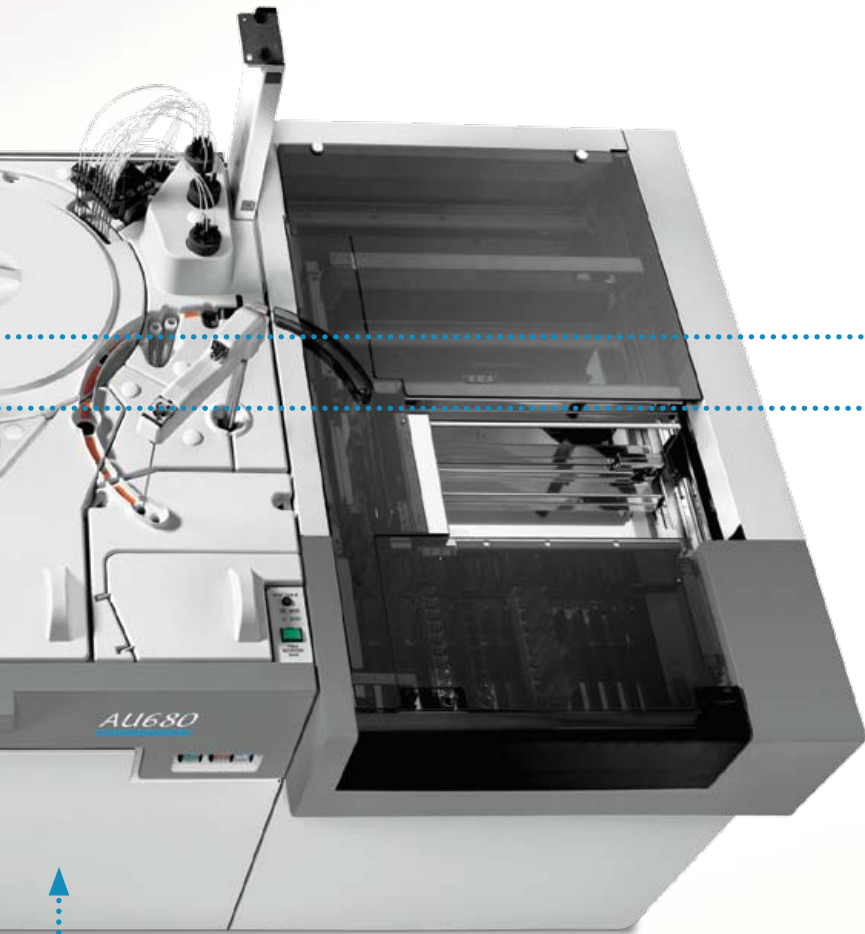
Replace the electrode



Replace the syringe



- ✓ No more than 3 steps
- ✓ Not longer than 60 seconds
- ✓ No tools required



Replace the sample probe



Replace the light source lamp



Standardized technology: better results, more productivity.

The AU name represents robust performance, high reliability and powerful throughput. Designed for test throughputs ranging from 800 tests per hour up to a phenomenal 6,600 test per hour, AU instruments deliver important information to help physicians expedite patient care.

Routine Chemistries
Urine/CSF Chemistries
Specific Proteins
Therapeutic Drug Monitoring
Drugs Of Abuse Testing
Esoteric Testing
Veterinary Applications



AU Standardization

Whichever AU system you choose, the results remain the same:

- Standardized analytical platforms
- Standardized reagents*, calibrators and controls
- Standardized with the same reference ranges
- Standardized with the same consumables and parts
- Standardized with the same consolidated, expansive test menu

AU Reagents

Simple, economical and easy to use. Concentrated formulations, maximizing onboard capacity. Packaged in bar-coded bottles for drop-in convenience.

Flexible Packaging

Reagents are packaged in multiple kit sizes ranging from 15, 30, 60, 120 and 180mL, tailored for your throughput needs.

Reagent Usage Monitoring

Reagent inventory capability tracks and predicts your daily needs and usage.

Advanced Calibration and QC

Perform calibration and QC on a maximum of five reagent bottles (bottle to bottle/ lot to lot) for the same assay in advance.

Automation that saves you time, more solutions that work for you.

Improving workflow efficiency and productivity

In the dynamic world of healthcare, we are forced to do more with less. Simplifying and automating processes in your laboratory are among the best ways to meet that challenge. Beckman Coulter helps your lab maximize the productivity of your current resources and improve your turnaround time with a full spectrum of automation and information systems.

Our progressive automation approach allows your lab to take advantage of the benefits of automation in incremental, flexible steps that make the most impact in your laboratory and delivers the highest levels of efficiency, speed and cost savings.

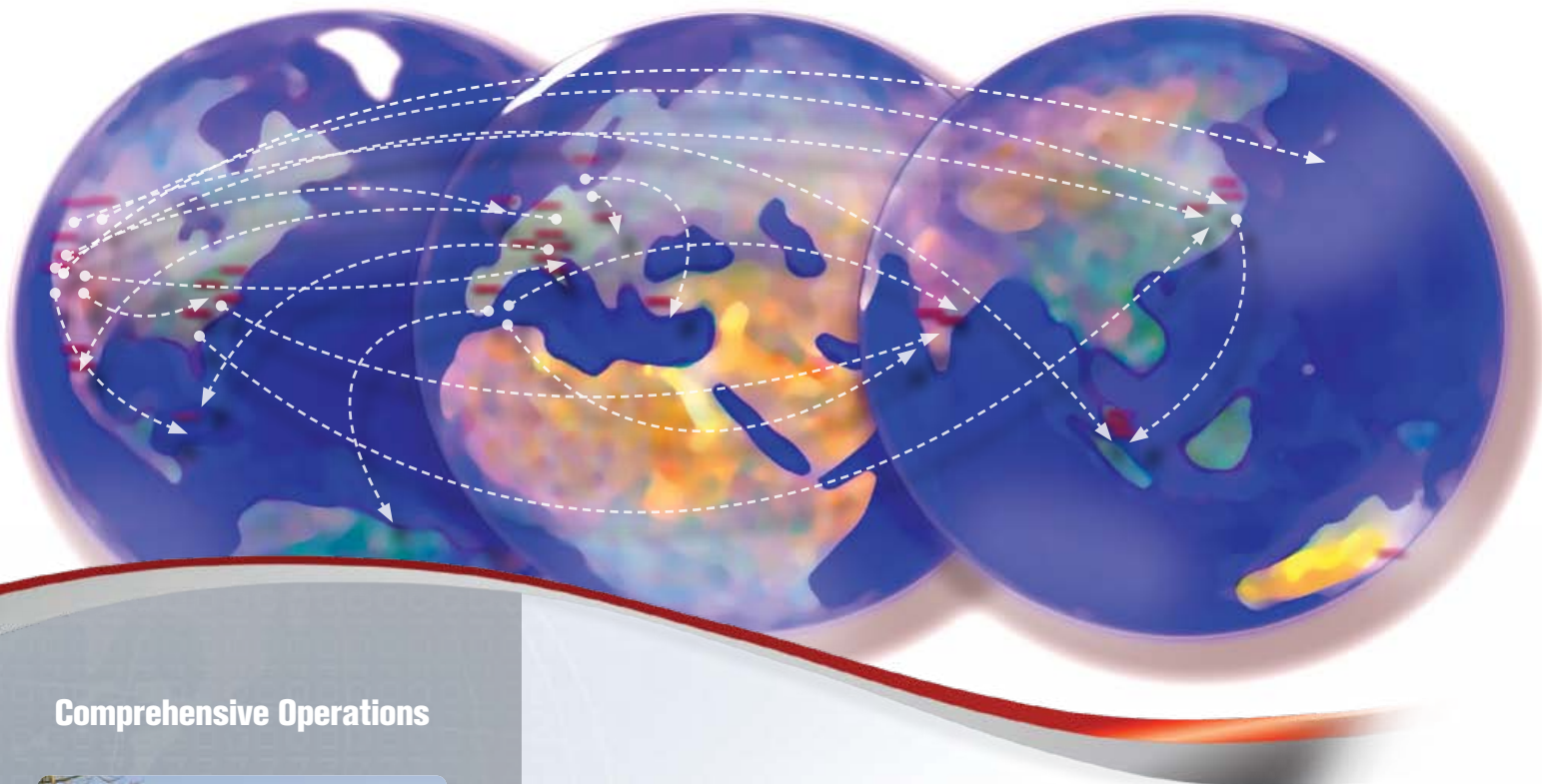
Beckman Coulter's AU automation connectivity** enables workstation consolidation with high throughput chemistry and immunoassay analyzers. Our REMISOL Advance† Clinical Information System provides full connectivity to the AU chemistry analyzers, allowing you to standardize your lab to manage and monitor multiple instruments and rapidly deliver high quality, verified diagnostic results.

See your rep to discuss what scalable automation solutions are available for your laboratory.



†REMISOL Advance is a trademark of Normand-Info SAS.

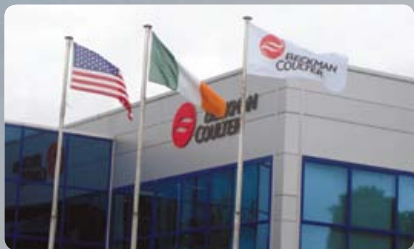
**Not available in all geographies.



Comprehensive Operations



Brea, CA World Headquarters



Reagent manufacturing in County Clare and Galway Ireland



AU instrument manufacturing base in Mishima, Japan



Munich research and development center of excellence; European training center

More Service and Support

Beckman Coulter is recognized worldwide for providing technical support when you need it, by phone or through the Internet. You can also expect prompt access to replacement parts and field technicians who stand ready to provide hands-on assistance. Our service agreements range from basic repair to instrument certification and cover a single instrument system, a complete lab or an entire institution. Each agreement is structured to make it simple to achieve the best possible laboratory performance with instruments you can trust.

PROService Remote Diagnostics

PROService* is a remote diagnostic system that enhances the technical support of your Beckman Coulter systems. **PROService** securely transfers instrument health information to a Beckman server via the Internet. This provides the means by which the Beckman Coulter Hotline and other Beckman Coulter service and support personnel can remotely view and diagnose the performance of your Beckman Coulter instrument.

PROService also automatically scans available instrument data for potential causes of downtime, allowing Beckman Coulter system experts to identify potential technical solutions from a remote location, often resolving issues before they impact your lab's operating efficiency. When necessary, service calls can be scheduled proactively and any necessary parts can be shipped ahead to facilitate efficient repair.



*Not all services available in all geographies.



Laboratories around the world rely on Beckman Coulter's promise of quality, integrity and innovation.

Our total laboratory solutions deliver accurate information, from medical research breakthroughs, to clinical trials, to laboratory diagnostics and point-of-care testing. A partnership with Beckman Coulter extends far beyond our products. With proven expertise in analyzing laboratory test processes, we collaborate with you to understand your requirements and create flexible solutions that meet your evolving needs.

We're better together. And together we help make a positive impact in people's lives.

Space for
FSC Logo

*All trademarks are the property of their respective owners

Beckman Coulter, the stylized logo, AU, AU480, AU680, AU2700, AU2700*Plus*, AU5400 and AU5800 are registered trademarks of Beckman Coulter, Inc. Windows is a registered trademark of Microsoft Corp.

Printed with soy ink



Australia, Gladesville (61) 2 9844 6000 Austria, Vienna (43) 662 857220 72 Canada, Mississauga (1) 905 819 1234
China, Shanghai (86) 21 3865 1000 Croatia, Zagreb (38) 51 489 9003 Czech Republic, Prague (420) 272 017 999
Eastern Europe, Middle East, North Africa, South West Asia: Switzerland, Nyon (41) 22 365 3707 France, Villepinte (33) 1 49 90 90 00
Germany, Krefeld (49) 2151 33 35 Hong Kong (852) 2814 7431 Hungary, Budapest (361) 25 09 330 India, Mumbai (91) 22 3080 5000
Italy, Cassina de' Pecchi, Milan (39) 02 953921 Japan, Tokyo (81) 3 5530 8500 Korea, Seoul (82) 2 404 2146 Latin America (1) (305) 380 4709
Malaysia, Kuala Lumpur (60) 3 5621 4793 Mexico, Mexico City (001) 52 55 9183 2800 Netherlands, Woerden (31) 348 462462 Poland, Warszawa (48) 22 366 0180
Puerto Rico (787) 747 3335 Russia, Moscow (7) 495 9846730 Singapore (65) 6339 3633 South Africa/Sub-Saharan Africa, Johannesburg (27) 11 564 3203
Spain, Madrid (34) 91 3836080 Sweden, Bromma (46) 8 564 85 900 Switzerland, Nyon (41) 0800 850 810 Taiwan, Taipei (886) 2 2730 2500
Turkey, Istanbul (90) 216 570 17 17 UK, High Wycombe (44) 01494 441181 USA, Brea, CA (1) 800 352 3433, (1) 714 993 5321

B2010-10988-DG-5K

www.beckmancoulter.com

© 2010 Beckman Coulter, Inc.

DIAG-PRINTED IN U.S.A.